

TPU 90A Filament

Recommended Print Settings



PRINT TEMPERATURE

The optimal printing range is 220° – 230°C



BED TEMPERATURE

Up to 50°C



PRINTING SPEED

- Base printing speed of 20 mm/s
- Infill speed of 15 mm/s
- Wall speed of 18 mm/s
- Initial layer speed of 15 mm/s



COOLING

For the best results cool to 100%.



BED ADHESION

Use a heated build plate, brim, or PVA glue stick.



OTHER TIPS

Use low extruder motor tension.

TPU 90A Filament

TPU 90A is an easy processing, standard product for printing jobs requiring rubber-like elasticity. This filament is ideal when low scratch and mar or soft touch feel are needed along with improved impact strength. It delivers rubber-like elasticity and is resistant to abrasions and performs well even at low temperatures.

APPLICATIONS

- Automotive, aerospace, general manufacturing
- Can be used for parts that need to maintain flexibility and/or require a resistance to oils, greases, and other solvents

Examples include:

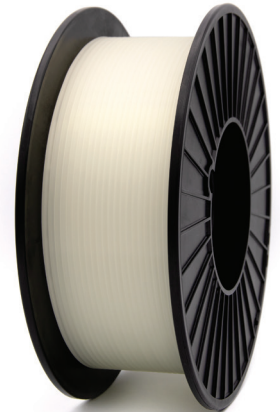
- Jigs, fixtures, and tooling
- Touch pads
- Grips
- Soft feet with low coefficient of friction (CoF)
- Seals

ADVANTAGES

- Easy printability, very consistent results
- Abrasion resistance
- Soft-touch properties
- Impact strength
- Elastomeric properties
- Operating temperature range of -40° C to 95° C
- Good chemical resistance to oils, greases, and other solvents

DIAMETERS

- 1.75mm and 2.85mm



Questions? Visit JabilAdditive@jabil.com, jabil.com/filaments

For the latest print profiles, search for Jabil Engineered Materials in the Cura Marketplace.

Learn More
About TPU 90A

